


الأقوى في البناء Power to build



الإسمنت السعودية
SAUDI CEMENT





Saudi Cement is the leader in the Saudi cement industry in terms of efficiency, quality and profitability.



Company Profile

A regional pioneer in the manufacture and supply of high-quality clinker and cement, Saudi Cement forms a vital link in the industry's supply chain, having supported many construction projects in the Middle East for more than half a century.

Strategically located in the Eastern Province of the Kingdom of Saudi Arabia, an area rich in high-grade raw materials, Saudi Cement is the leader in the Saudi cement industry in terms of efficiency, quality and profitability. Since its establishment in 1955, this joint stock company has been enjoying consistent capacity expansions and profitability.

In 2008, Saudi Cement achieved one of the most important milestones in its history with the installation of two new production lines with a combined capacity of 24,000 tons of clinker per day. This expansion, widely considered to be the world's largest at that time, increased Saudi Cement's available capacity to an average of 9 million tons of clinker per year, elevating the Saudi cement industry pioneer to a unique position in terms of financial and production efficiency.

Saudi Cement is one of Saudi Arabia and GCC's most trusted companies. End-users and contractors rely on Saudi Cement's consistency and quality, utilizing its products for major highways, bridges, airports, seaports, railways, metros and numerous housing and commercial projects.

Strategic Investment

Saudi Cement has a strong interest in the development of the regional building materials sector, and has strategic investments in the cement industry's supply chain. Its major associates include United Cement Company (a Bahraini closed joint stock company engaged in cement trading and distribution in the Kingdom of Bahrain) which was established in 1973 and Cement Product Industry Co. Ltd. (A Saudi limited liability company producing high quality packaging materials for cement and other products) which was established in 1971.

Vision, Mission and Values

Vision


To be world-class producer of cement and strive for excellence and innovation.

Mission

As a cement industry pioneer in the region, Saudi Cement aims to maintain its leadership position and reputation for safety, health, environment , quality, cost efficiency, and advanced operations; through a highly motivated team, Saudi Cement's goal is to exceed the expectations of all its stakeholders, including customers, employees, shareholders, and the community at large.

Values

- To provide our customers with quality products and services.
- To provide an environment for our people to excel, develop and grow.
- To achieve attractive returns for our shareholders and finance growth, while adhering to the highest ethical standards and Islamic principles.



The year 2020 marks the 65th anniversary of Saudi Cement's inception. Building on its history of success, Saudi Cement continues to look forward to the future.

Products

Saudi Cement has the required technologies and capabilities to produce any type of cement required by the market, and its primary products portfolio consists of:



- **Cement Clinker**
(Semi-finished product & raw material used to produce cement when Grinded with other additives)



- **Sulfate Resistant Cement**
(SRC, Type V)
Complies to ASTM C-150



- **Ordinary Portland Cement**
(OPC, Type I)
Complies to ASTM C-150



Total daily capacity of 28,000 Tons of Clinker, equal to 9.2 million tons per year, which is also equivalent to 9.7 million tons of cement yearly.



28,000

**Tons of clinker
per day**

9.7

**Million tons of
cement yearly**



Manufacturing Capacity

Saudi Cement's Plant is located in the eastern province approximately 120 kms from Dammam, near the historic city of Al-Hasa.

The Plant consists of three kiln lines that are currently in operation. Line 6, designed for 4,000 tons of clinker per day, was commissioned in 1995, while lines 7 and 8, with a combined capacity to produce 24,000 tons of clinker per day, were commissioned in 2008. Together these lines have a total capacity of 28,000 Tons of Clinker, equal to 9.2 million tons per year, which is also equivalent to 9.7 million tons of cement yearly.

The raw material is extracted from the Plant's Quarry, located around 11 kms away from the Plant and transported over a long belt conveyor. The Company's Hofuf Plant is equipped with some of the latest equipment-quarry crushers, vertical roller mills for raw grinding, clinker coolers, cement grinding high pressure roller presses, kilns and cement mills.



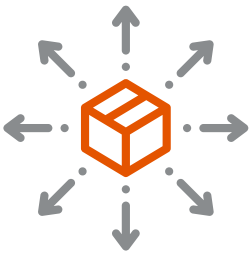
Quality Control

Saudi Cement products comply with all national and international standards "SASO, ASTM, BS and EN", ensuring consistent and superior quality.

Saudi Cement has received a Certification of Conformity for its Ordinary Portland Cement (OPC) from the Belgium Certification Body (BE-CERT), entitling it to use the "CE" certification mark on OPC products and documentation, which allows it to export to the European market.

Saudi Cement Quality Management System complies with ISO 9001:2015. This certification, awarded by German accreditation firm TUV NORD, acknowledges the high-quality standards maintained by Saudi Cement.

Saudi Cement is a recipient of the prestigious King Abdul-Aziz Ideal Factory Award and the Saudization Award, both won twice, and the Exporting Award.

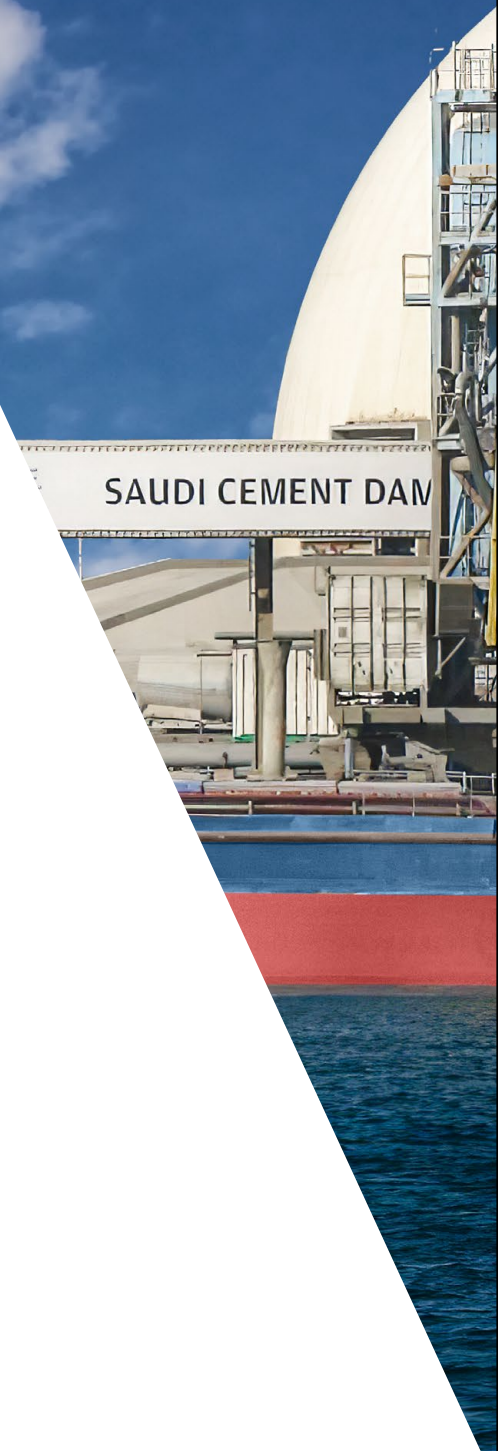


Port Terminal & Logistics

Saudi Cement is highly capable when it comes to Cement & Clinker exports (nearly 3 million tons annually, out of its 9.7 million tons total production capacity) with a state-of-the-art Export Terminal at King Abdulaziz Port in Dammam, a unique feature compared with other producers in the region. The Export Terminal is connected with Hofuf Plant (140kms) via railway, providing a reliable infrastructure to promptly transfer stock. This gives Saudi Cement a competitive edge over other producers in the region and stretch for Cement & Clinker export opportunities throughout the global market.

A regional pioneer in the manufacture and supply of high-quality Clinker & Cement, Saudi Cement has resumed its export operations throughout the region, stretching its products' reach to consumers from Africa to East Asia and beyond.

Since its establishment in 1955, this joint stock company has been proudly fulfilling both local and international requirements for its products by capitalizing on its heritage of quality products and services.







Geographic Coverage

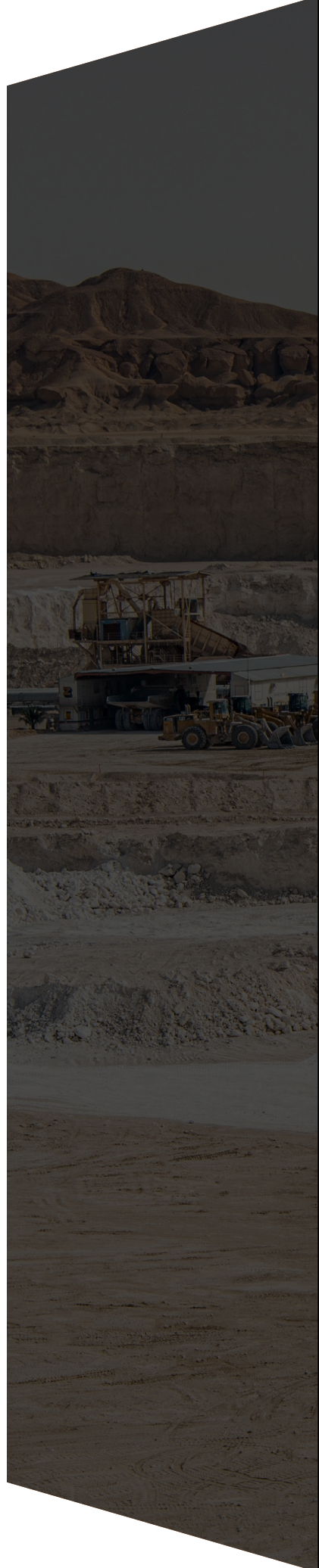
Saudi Cement's extensive logistics capabilities and infrastructure include road and railway transport and its own specialized port terminal which gives the Company the ability to export throughout the world.

Currently, most of Saudi Cement's sales are generated locally which are transported by road and railway in bags and in bulk to clients mainly in the Eastern and Central regions of Saudi Arabia. Saudi Cement has the capability to export cement and clinker to GCC countries and all other countries worldwide.




Market Share

Saudi Cement's local market share is one of the largest among the cement manufacturers in the Kingdom. Its major customers include distributors, ready-mix plants, block factories, contractors and real estate developers.





Saudi Cement has the
capability to export cement
and clinker to GCC countries
and all other countries
worldwide.

A low-angle, upward-looking photograph of a massive industrial structure, likely a cement plant. The image is dominated by a complex, dark steel truss roof that spans a large area. Below the roof, several levels of industrial walkways and stairs are visible, constructed from steel and featuring bright orange safety railings. The stairs lead up to different platforms. In the background, a tall, vertical industrial structure is illuminated with warm yellow lights. The overall atmosphere is industrial and imposing. A white diagonal line cuts across the lower portion of the image, separating the background from the text overlay.

Saudi Cement has contributed to a variety of health-related campaigns, including anti-smoking, drug prevention, cancer and diabetes awareness.



Corporate Social Responsibility (CSR)

Saudi Cement has a long-standing commitment towards the community, supporting many worthy causes in the Kingdom of Saudi Arabia. The Company's corporate culture encourages giving back, with many of its employees passionately volunteering for these initiatives.

Saudi Cement supports many of the Kingdom's charity funds and specialist community organizations. It has contributed to a variety of health-related campaigns, including anti-smoking, drug prevention, cancer and diabetes awareness. Saudi Cement organizes hospital visits, presenting gifts to patients. It also supports development work, such as Quranic learning, youth initiatives, charities for the disabled, and women's empowerment.

Saudi Cement demonstrates its commitment to family values by regularly sponsoring festivals and school carnivals that bring people together.

One of Saudi Cement's major CSR initiatives was its participation in funding the construction of Trauma Center in Al-Hasa at the National Guard Hospital, donating SR 50,000,000. The facility is a significant enhancement to the hospital and a major part of the community's health infrastructure.

Because giving is not just about making a donation, it is about making a difference.

Saudi Cement participated in the fight against COVID-19 pandemic through supporting The Saudi Health Endowment Fund with 5,000,000 SR.



Safety, Health & Environment

Saudi Cement is certified for being OSHAS 18001 & ISO 14001 Safety, Health & Environment compliant, and for following stringent standards based on the certification in all operational activities. The Company has also been certified by the Presidency of Meteorology & Environment (PME) for complying with the regulations set in terms of pollution control. Regular training and orientation sessions are being given to all Company employees & contractors to ensure increased level of knowledge for conducting risk assessment & mitigation measures for all potential hazards in their day-to-day work. It is a culture which Saudi Cement has instilled in every staff, making it a part of their life. We believe that a safe and healthy workplace is a prerequisite for motivated, productive and committed people. It is a key feature of a leading organization nowadays and has been Saudi Cement's most important priority. In fact, we have made Health & Safety of our Company employees and contractors our number one priority.



Careers

Saudi Cement operates a multicultural working environment, offering qualified Saudi nationals and expatriates the opportunity to be part of a world-class organization. It recognizes and rewards hard work and initiative, giving all employees who perform the chance for upward mobility.

Contact us:

Head Office

Kingdom of Saudi Arabia
Eastern Province
3964 - King Saud - Al-Amamrah Area - Unit 1
Dammam 32415 - 7102
Tel: (+966) 013 835 8000
Fax: (+966) 013 834 3091

Riyadh Office

Kingdom of Saudi Arabia
Central Region
1st Floor, Palladium Center, Office 351,
Exit # 16, Eastern Ring Road,
Cross Umar bin Al-Khattab, Riyadh 12863.
Tel: (+966) 011 464 1454
Fax: (+966) 011 464 4516

Hofuf Plant

Kingdom of Saudi Arabia
Eastern Province
P.O. Box 384
Al-Hofuf - 31982
Tel: (+966) 013 538 9999
Fax: (+966) 013 533 1437

Port Terminal

Kingdom of Saudi Arabia
Eastern Province
3964 - King Saud - Al-Amamrah Area - Unit 1
Dammam 32415 - 7102
Tel: (+966) 013 835 8000
Fax: (+966) 013 834 3091

Marketing & Sales Department:

Tel: (+966) 013 835 8251
Fax: (+966) 013 834 3091
Email: sales@saudicement.com.sa

